



Breast Cancer  
Foundation NZ

# Leaving a gift in your Will for

## Breast Cancer Foundation NZ

---

mother,  
daughter,  
sister, friend,  
future



**We believe one day,  
no one will lose their life  
to breast cancer.**

---

**Help achieve this goal by leaving us a  
gift in your Will.**

Leaving a gift for Breast Cancer Foundation NZ (BCFNZ) in your Will is a very special, long-lasting act of kindness that will make a positive difference to the future of our mothers, daughters, sisters, and friends.

Most gifts people leave in their Will for BCFNZ are from dedicated people like you. We receive no government funding so a gift like this, no matter how big or small, is an exceptional way to ensure your kindness lives on, saving women's lives long after you have gone.

# The life-saving work you can make possible

**Our vision is zero deaths from breast cancer.** We will achieve this through early detection, research, and support. To do this, we need help from dedicated people who want to make a positive difference in their community, people who want to continue to support the charities they care about long after they are gone, and people who want to make a positive difference in the future of their mothers, daughters, sisters, and friends. People like you.

**By leaving a gift in your Will for BCFNZ you will be funding life-saving work, that will enable us to reach our shared goal of zero deaths from breast cancer.**



## Awareness, early detection, and education

You'll be supporting health promotion campaigns, education programmes to upskill healthcare professionals, and outreach in workplaces and communities across the country. We target rural, isolated, and hard-to-reach communities to promote the importance of early detection - because this is what saves lives.



## Research

Scientific breakthroughs play a vital role in finding better treatments for breast cancer. Therefore, you will be funding New Zealand-based scientific and clinical researchers who are focused on improving breast cancer detection, management, and survival. These researchers will help us achieve our goal of zero deaths from breast cancer.



## Support

Our support programme aims to help women access the best possible breast cancer treatment to achieve a positive outcome. Our specialist breast care nurses provide tailored advice and information, help patients to manage treatment and side effects, and connect patients to local and national support services.

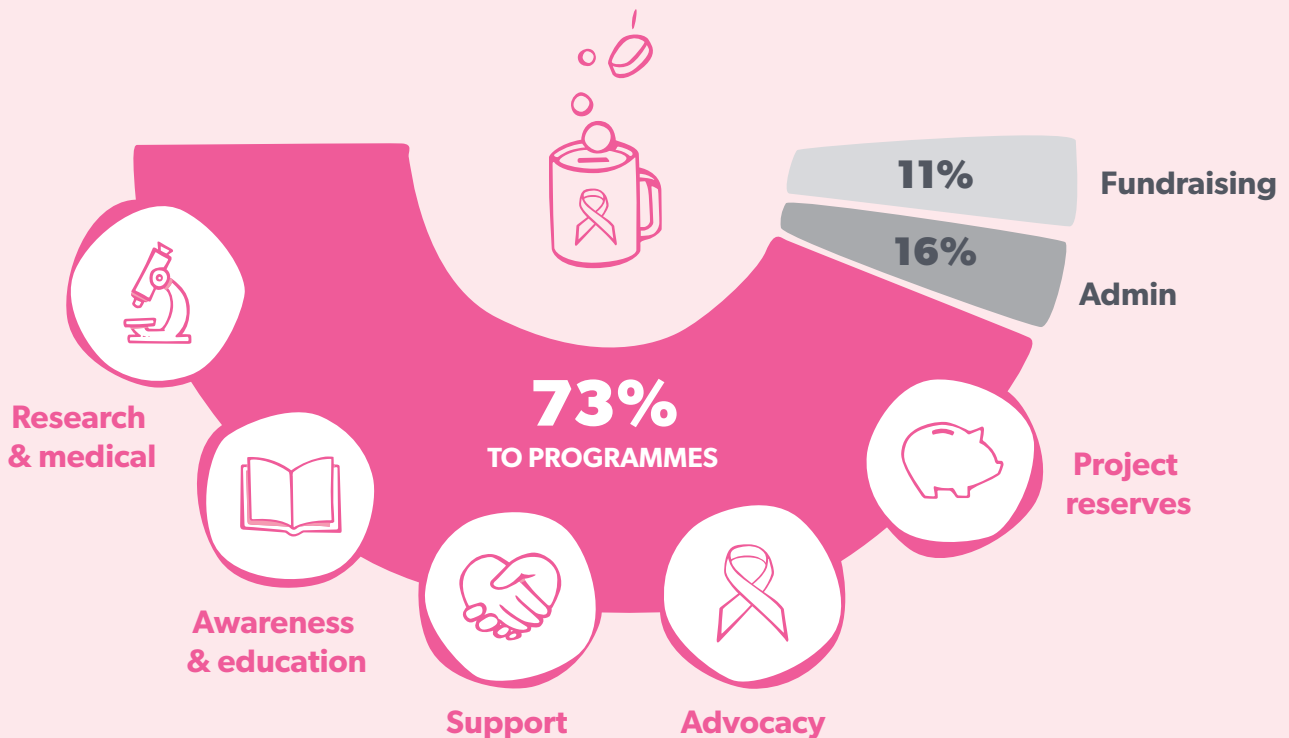


## Advocacy

With your help, we advocate for changes to the public health system to improve access to mammograms and essential treatments. Examples include getting the breast screening age raised from 69 to 74 and new breast cancer medicines like Keytruda being publicly funded.

# Using your gift effectively

Your gift will be used widely and cost-effectively so that it has the greatest impact, and will largely be spent across our four key programmes.



You can be assured that your gift will support women like Jayne, who was diagnosed with breast cancer after a routine mammogram in October 2020, at the age of 47.



**It was a huge shock and the news came the day before her daughter's 16th birthday.** Jayne had a mastectomy of the left breast and while recovering from that surgery, Jayne learnt there was also cancer in her right breast, so had to have another mastectomy three weeks later. That was followed by six months of chemotherapy, three weeks of radiation treatment, and then reconstruction surgery almost exactly one year to the day of her diagnosis.

Jayne says it was a traumatic and whirlwind time, but Breast Cancer Foundation NZ has made a huge difference:

*"The nurses were amazing at providing advice and support, as well as the mybc community was another great resource to engage with others who were on the same journey as me."*



## What's next?

**This is entirely up to you and is something you should talk through with your family and friends.**



**We highly recommend getting in contact with your legal advisor, or organisations that have an online Will generator. Consulting an expert is the best way to ensure your intentions are reflected accurately and carried out. They can advise you on how to structure your will so you can look after your nearest and dearest first of all, and then your charitable gifts.**

Or if you already have a Will, they can easily modify it to reflect your wishes to leave a gift for BCFNZ.

They may suggest the inclusion of a paragraph similar to this:

***"I give and bequeath to Breast Cancer Foundation NZ for its work in early detection, research, and patient support, (list here the percentage or residue, or specific amount of money and/or items), free of all death and estate duties. I declare that the official receipt of Breast Cancer Foundation NZ shall be a full and sufficient discharge to my executors."***

### **If you decide to leave BCFNZ a gift in your Will, we promise to...**

- 1** Respect your wishes. We understand that your need to look after your nearest and dearest takes priority when you are planning your Will.
- 2** Use your gift carefully and cost-effectively to help achieve zero deaths from breast cancer.
- 3** While we can, we will keep you informed about how we will use your gift to continue to save women's lives long after you are gone.
- 4** Respect your privacy and recognise that your Will is completely personal to you. We will keep your giving confidential, even anonymous if you wish.
- 5** Respect your right to change your mind. We know that life can throw unexpected changes at us, so we certainly understand if you need to amend your Will to reflect your change in circumstances, and you do not need to tell us if you do.

### **Let us know so we can thank you**

**We would love to be able to acknowledge your desire to make a positive difference in the future of our mothers, daughters, sisters, and friends. However, we can't if we don't know about your plan to leave a gift.**

Please let us know if you have included a gift to BCFNZ in your Will, or if you intend to.

**Holly Bateman, Philanthropy Manager**

hollyb@bcf.org.nz | 09 304 0369

Also, by letting us know about your intentions, you can join the Athlae Lyon Pink Ribbon Bequest Society.



# Athlae Lyon Pink Ribbon Bequest Society

**The Athlae Lyon Pink Ribbon Bequest Society is a special group of like-minded supporters. They have a shared vision of zero deaths from breast cancer, wish to celebrate the gift they'll leave behind, and want to know how their gift will achieve this shared goal.**

In 2009 Pink Ribbon Bequest Society was formed by Athlae Lyon, who was a champion for breast cancer in our communities. When she suddenly passed away in 2010, she left a gift for the Foundation in her Will.

*"Athlae understood that as long as breast cancer remained prevalent in our community, the Foundation would need sustainable income to fund its vital work. This way, her compassion lives on through the essential work of the Foundation."*

**– Cliff Lyon, Athlae's husband and member of the Pink Ribbon Bequest Society.**

We host annual events and share updates with the Pink Ribbon Bequest Society to celebrate the impact members will have on future generations and to highlight our shared goal of improving breast cancer outcomes for our mothers, daughters, sisters, and friends.





**Being a part of the Pink Ribbon Bequest Society allows us to thank you during your lifetime and acknowledge your dedication to achieving our goal of zero deaths from breast cancer.**

# Melanie is an incredibly passionate woman, with a long history in the education sector.

She has felt the impacts of breast cancer, losing friends and her beloved sister-in-law, Kate, who died from breast cancer in 2013.

*“Kate was only 51 and she had such a spiritual aura about her. She just was one of those extraordinary, lovely people.*

*“I’m an educationalist, I need to understand things, so I needed to look into breast cancer after Kate died, which led me to Breast Cancer Foundation.”*

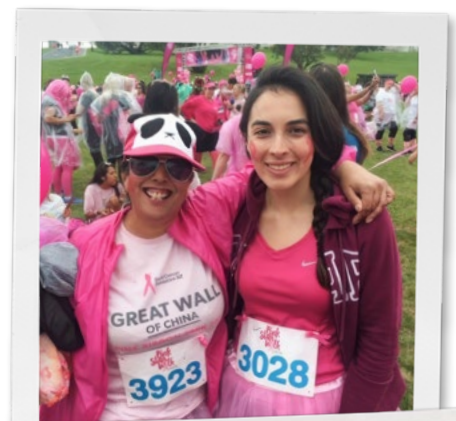


**Melanie** was brought up with the values of giving back and supporting people, so she raised \$10,000 in 2018 on a walk of the Great Wall of China with a group of dedicated women. She also hosts a Pink Ribbon Breakfast each year with her work, buys tickets to the Pink Ribbon Walk with her friends, shakes a bucket for the Pink Ribbon Street Appeal, and most importantly is leaving the Foundation a gift in her Will.

*“In my lifetime I want to see zero deaths from breast cancer, I don’t want my loved ones to lose anyone else to breast cancer.*

*“The best way to do this is through education, that’s what Breast Cancer Foundation does. Sharing information about getting your boobs checked, and getting women to go to that half-hour screening appointment that could save their life.*

*“Because I’m not going to leave a child on this planet, but I want to leave a legacy of education, which is what I am all about.”*





mother,  
daughter,  
sister,  
friend,  
**future**



**Breast Cancer  
Foundation NZ**

**If you have any questions or want to let  
us know of your intentions, please get in  
touch with us**

**Holly Bateman  
Philanthropy Manager**

hollyb@bcf.org.nz

09 304 0369

PO Box 99650, Newmarket, Auckland 1149

[breastcancerfoundation.org.nz/bequests](https://breastcancerfoundation.org.nz/bequests)

  @pinkribbonNZ

